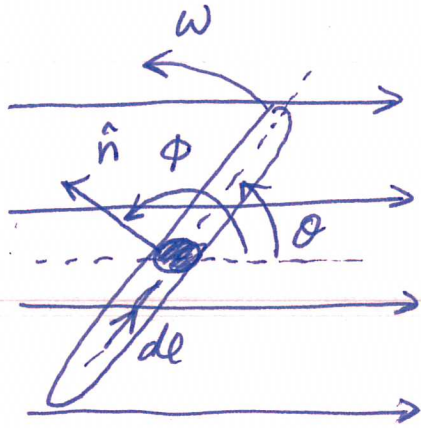


1



$$\phi = \theta + \frac{\pi}{2}$$

$$\Phi_B = \int_M d^2A \hat{n} \cdot \vec{B}$$

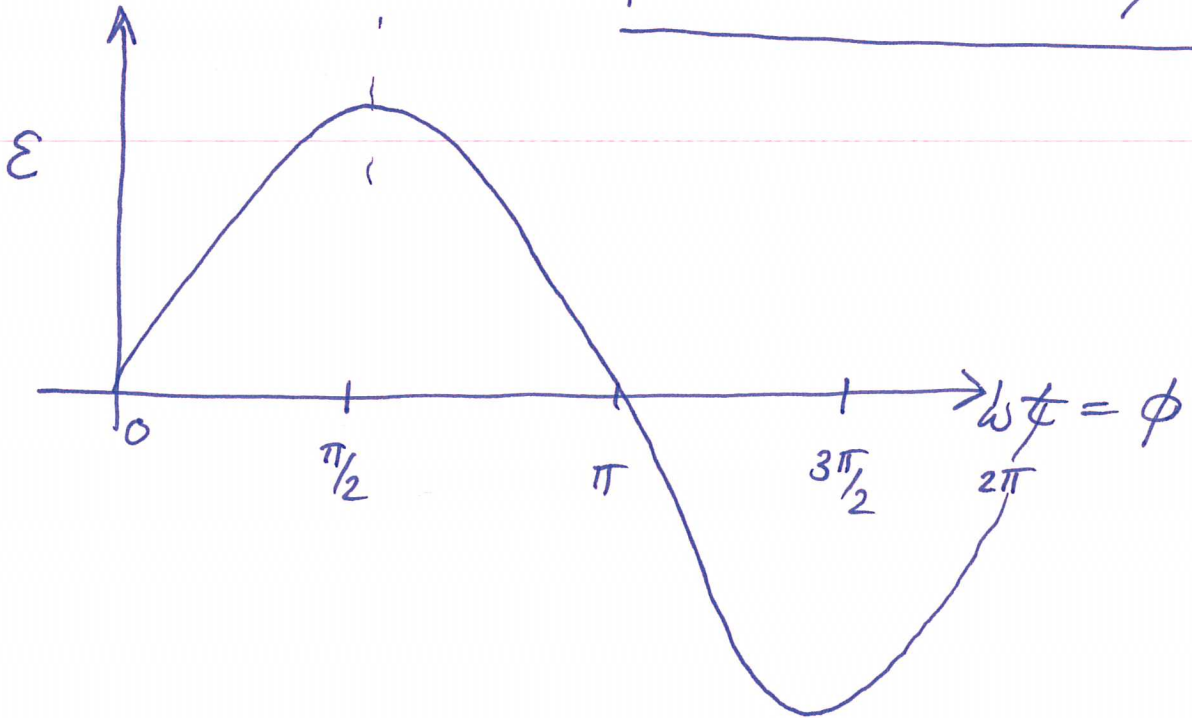
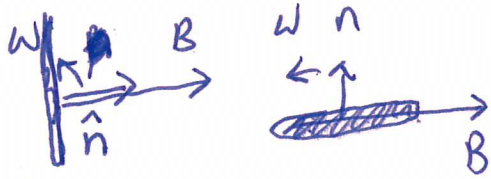
$$\Phi_B = AB \cos \phi$$

$$\phi = \omega t$$

$$\Phi_B = AB \cos \omega t$$

$$\mathcal{E} = - \frac{d}{dt} \Phi_B =$$

$$\mathcal{E} = AB\omega \sin \omega t //$$



AC Voltage.